

Working together to reduce crime
and the fear of crime



ANNUAL REPORT

April 2009-10

Report by Nicky Collinson, Communications Officer, Safer Surrey Heath Partnership

Tel: 01276 707359 Email: nicola.collinson@surreyheath.gov.uk

| CONTENTS | PAGE |
|---|-------------|
| 1. INTRODUCTION | 3 |
| 1.2 Executive summary | |
| 1.3 Report highlights | |
| 2. RECORDED CRIME STATISTICS 2009/10 | 4 |
| 3. PARTNERSHIP ACTION PLAN 2009/10 | |
| 4. COMMUNITY INCIDENT ACTION GROUP (CIAG) | 4 |
| 5. JOINT ACTION GROUP (JAG) | 5 |
| 6. PRIORITY 1: REDUCE FEAR OF CRIME | 5 |
| 6.1 Driver behaviour (speeding and parking) | |
| 6.2 Misconceptions about crime and ASB | |
| 6.3 Shared responsibility for community safety | |
| 7. PRIORITY 2: REDUCE PUBLIC PLACE DISORDER | 7 |
| 7.1 Secondary fires | |
| 7.2 Alcohol-related disorder | |
| 7.3 Criminal damage | |
| 8. PRIORITY 3: REDUCE PRIORITY CRIMES | 9 |
| 8.1 Domestic abuse | |
| 8.2 Domestic burglary | |
| 8.3 Vehicle theft | |
| 9. PRIORITY 4: SUBSTANCE MISUSE | 11 |
| 9.1 Class A drug supply | |
| 9.2 Illegal alcohol supply | |
| 9.3 Alcohol education and awareness | |
| 10. PRIORITY 5: ORGANISATIONAL ISSUES | 13 |
| 10.1 Section 17 | |
| 10.2 Information sharing | |
| 11. HEATHERSIDE YOUTH FACILITY PROJECT | 13 |
| 12. PARTNERSHIP ACTION PLAN 2010/11 | 14 |
| 13. COMMUNICATIONS | 14 |
| 14. ABOUT THE SAFER SURREY HEATH PARTNERSHIP | 14 |

1. INTRODUCTION

Surrey Heath is one of the safest boroughs in England, with overall crime levels below the national average. The borough ranks third safest for overall levels of crime out of 11 boroughs in Surrey, which is the safest county in England.

Correspondingly, residents' satisfaction with their local area is high - having risen from 79 per cent in 2006 to 87 per cent in 2008 (Surrey Heath Borough Council biennial Place Survey). Confidence in local policing within Surrey Heath is also high, with the number of residents being 'very' and 'fairly' confident with local policing rising from 81 per cent in 2008/09 to 87 per cent in 2009/10 (Surrey Policing Plan rolling confidence target measures).

The Safer Surrey Heath Partnership (SSHP) is committed to making Surrey Heath even safer - a safer place in which to live, work and visit. The Partners are:

- Surrey Heath Borough Council (SHBC)
- Surrey County Council (SCC)
- Surrey Fire and Rescue Service (SFRS)
- Surrey Police (SP)
- Surrey Police Authority (SPA)
- Surrey Primary Care Trust (PCT)
- Surrey and Sussex Probation Trust (April 2010 onwards)

This Annual Report rounds up the key community safety activities undertaken by partners during the year. It also reviews the Partnership's performance in achieving the objectives set out in its 2009/10 PAP.

1.2 EXECUTIVE SUMMARY

Throughout 2009/10, frontline officers from the partner agencies continued to work with representatives from associated organisations, including the voluntary sector, and with the community, to maintain and enhance the borough's reputation as one of the safest places in the country to live, work and visit. Partnership working was chiefly achieved through the Partnership's operational arms – the Community Incident Action Group (CIAG) and Joint Action Group (JAG) (*see Sections 3 and 4*), which meet every six weeks throughout the year.

In April 2009, the Partnership published its third annual Partnership Action Plan (PAP) following its 2008/09 strategic assessment (*see Section 5*). The PAP outlined the Partnership's key priorities for the year, and served as a live working document to ensure key objectives and actions were delivered. The PAP was updated and reviewed on a monthly basis by the Partnership Officers Group (POG), made up of Partnership representatives.

In the year to April 2010, the Partnership contributed funds towards more than 15 community safety initiatives and projects, either directly or through funds allocated to JAG. Two major community safety projects funded by the Partnership in 2009/10 were the Camberley Together Against Crime (CTAC) and the Camberley Street Angels schemes (*see Section 7.2*).

1.3 REPORT HIGHLIGHTS

- 86.8 per cent of people 'fairly'/'very' confident in local policing
- 91 per cent detection rate for drugs offences
- 17 per cent reduction in domestic burglary (from 241 to 200 offences)
- 19.4 per cent reduction in road deaths/serious injury (from 36 to 29)
- 25 per cent reduction in criminal damage over Halloween
- Camberley Street Angels launched
- Significant progress on Heatherside youth facility project

2. RECORDED CRIME STATISTICS 2009/10

Surrey Heath saw an overall crime increase of 4.8 per cent - from 4,203 total notifiable crimes during 2008/09 to 4,405 during 2009/10.

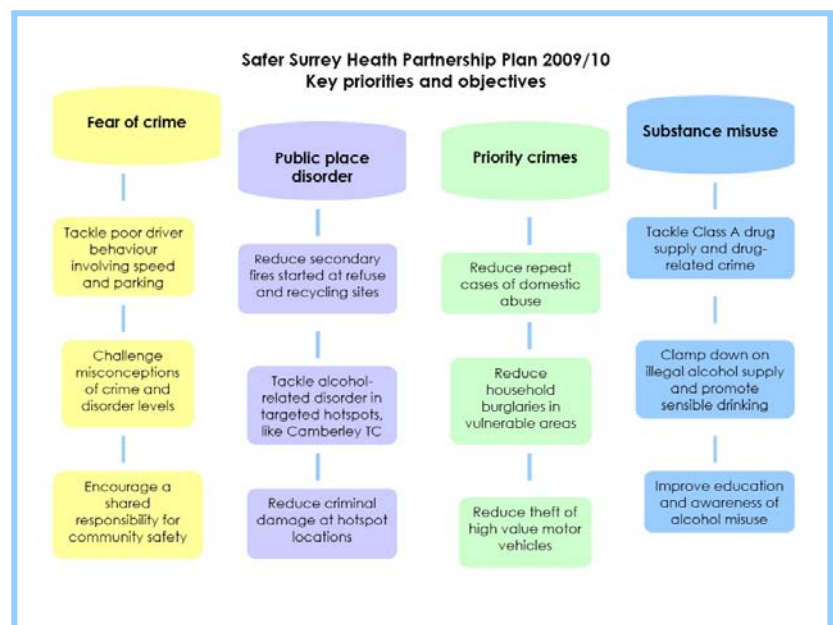
There was a reduction in two out of eight crime areas:

- Most serious violent crime: up by 87.5 per cent, from eight to 15 offences
- Robbery: up 122 per cent from nine to 20 offences
- Other violent crime: up by 15.4 per cent, from 866 to 999 offences
- Vehicle crime: up 21.8 per cent from 372 to 453 offences
- Burglary dwelling: down 17 per cent from 241 to 200 offences
- Burglary non-dwelling: up three per cent from 282 to 290 offences
- Criminal damage: up 2.3 per cent from 957 to 979 offences
- Drugs offences: down 12.5 per cent from 168 to 147 offences

3. PARTNERSHIP ACTION PLAN (PAP) 2009/10

Each year, the Partnership assesses the level of crime and disorder, including anti-social behaviour (ASB) that has been reported. Known as an annual strategic assessment, this takes into account information provided by all partners, and supporting organisations such as housing associations and outreach providers.

As well as giving the Partnership a detailed picture about actual levels of crime and disorder in the borough, the strategic assessment provides information about residents' concerns. It provides the Partnership with intelligence and evidence of the priorities and problems that will inform effective and responsive delivery structures via the Partnership Action Plan (PAP).



In April 2009, a summary of the 2009/10 PAP was published on the Partnership's website (as above), while a detailed 'live' PAP was continually reviewed and updated throughout the year by the Partnership Officers Group (POG). The PAP outlines: objectives, actions, timings, lead partners, communications activities, and performance.

4. COMMUNITY INCIDENT ACTION GROUP (CIAG)

The Community Incident Action Group (CIAG) is a multi-agency problem-solving group, which is accountable to the Partnership. It seeks to divert, assist or control individuals or families in the community who have been identified as having an adverse impact on the community. Members of the group deal with problems like truancy, ASB and prolific offenders, seeking preventative and long-term solutions to reducing crime and disorder in the borough.

Members of CIAG meet every six weeks to agree actions to reduce the negative impact that problem individuals and families have on the wider community through their ASB. Throughout the year, Partnership agencies continued to provide interventions and support for the family unit. All individual cases that are nominated are addressed appropriately using the relevant partner agencies, with the need for early diversionary activities and intervention of foremost importance. Surrey County Council (SCC) Youth Development Service (YDS) and Surrey Fire

and Rescue Service (SFRS) are actively involved in targeted interventions, with initiatives such as the Army Outreach Project and Youth Engagement Scheme (YES) (see Section 7.1).

A key issue for CIAG during the year was the nuisance behaviour of a group of young people from Frimley. In Q4, four members of the group were served interim ASB orders (ASBOs) to the great relief of the community around Ansell Road, Frimley. As of April 2010, the group were behaving in accordance with the terms of their orders. Surrey YDS has been supporting this group by providing diversionary activities in the form of a new Monday Night Project.

As at April 2010, there were six open CIAG cases involving young people (aged 17 and under), and five adult open cases.

5. JOINT ACTION GROUP (JAG)

Like CIAG, the Joint Action Group (JAG) is a multi-agency problem-solving group accountable to the Partnership. The difference is that JAG seeks to address problems in specific *locations* in the community, as opposed to *individuals*. These could include nightclubs, shopping parades or recreation grounds. The police can use JAG to discuss potential dispersal orders in problem areas to deal with ASB.

Using the expertise that exists within the group, JAG members decide priorities, agree action plans, allocate resources and ensure there is a co-ordinated response to issues highlighted at six-weekly JAG meetings. Examples of issues dealt with by JAG include: residential burglary; town centres (including street drinkers, town centre disorder, etc); substance misuse; domestic abuse; ASB; and public reassurance. The Surrey Heath JAG is now one of the first in Surrey to utilise A&E data from local hospitals (in this case Frimley Park Hospital) to target interventions to reduce alcohol-related assault.

Key issues nominated by JAG officers during 2009/10 included:

- **Criminal damage at Frimley Green recreation ground**
In Q1, the issue of repeat vandalism at Frimley Green recreation ground was nominated to the JAG agenda. A Frimley Green Rec. project working group was established to seek funding to regenerate the area to 'design out' ASB and criminal damage, and to engender a greater sense of community spirit in the neighbourhood. In February 2010, the group successfully bid for a £40k grant from the Surrey Criminal Justice Board (SCJB) Community Cashback scheme. This went towards completing Phase 1 work, including landscaping, new fencing, repairs to the sports pavilion, and trees and shrub planting with support via the SCJB Community Payback scheme. Phase 2 of the project was due to begin in May 2010. This issue was removed from the JAG agenda in Q3.
- **Youth disorder and noise nuisance at Lightwater Country Park**
JAG-funded interventions during Q3 and Q4 resulted in a significant reduction in reports of ASB in the area. Interventions included the installation of a new automatic barrier at the entrance to the park, and of electrics on lampposts for CCTV, and increased police patrols. This issue was removed from the JAG agenda in Q4.
- **Criminal damage at Chobham Road recreation ground**
Reports of arson and criminal damage reduced dramatically after JAG intervened to tackle damage to the Chobham Road Rec. cricket pitch and breaks-ins to the sports building. JAG partly funded the erection of substantial fencing around the compound, and was supported by Siemens with the use of its CCTV. This issue was removed from the JAG agenda in Q4.
- **Youth disorder and Section 30 Order for Ansell Road, Frimley**
A Section 30 Order for the Ansell Road area of Frimley, coupled with intervention through CIAG by Surrey YDS and Surrey Police, reduced the number of reports of ASB around the shops. This issue remains on the JAG agenda for monitoring.

6. PRIORITY 1: REDUCE FEAR OF CRIME

Reducing fear of crime remained a priority for the Partnership during 2009/10, specifically:

- Tackling driver behaviour involving speeding and bad parking

- Challenging misconceptions about crime and disorder levels
- Encouraging a shared responsibility for community safety

6.1 Driver behaviour

The number of people killed or seriously injured (KSIs) on Surrey Heath roads fell from 36 in 2008/09 to 29 in 2009/10 – a decrease of 19.4 per cent. Therefore, the average number of KSIs per month in Surrey Heath fell from 3.7 per month in 2008/09 to 2.41 per month in 2009/10. There were two fatalities on Surrey Heath's roads in 2009/10, compared to one in 2008/09.

The Partnership once again supported the highly successfully SFRS-led **Safe Drive, Stay Alive** initiative for young people with local publicity. In 2009, 371 pupils from three Surrey Heath schools attended the hard-hitting road safety show at Dorking Halls, compared with 450 pupils from four schools in 2008. It is hoped that the college which did not attend in 2009 will attend in 2010.

A number of **Casualty Reduction Days** were held in Camberley Main Square and at Camberley Fire Station, and partners supported the SCC Drive Smart campaign locally with publicity and leaflet distribution. Events linked to Drive Smart included a **National Specials Weekend**, which saw a three-day anti-social driving operation held in Bisley over the weekend of February 5/6/7 2010. A total of 88 vehicles were stopped and 53 fixed penalty notices were issued to drivers for not wearing a seatbelt. A supporting exhibition, highlighting Drive Smart and its aims, was displayed in the Mall shopping centre in Camberley during the same weekend.

The resident-run **Community Speed Watch** scheme continued to contribute to road safety awareness in Surrey Heath during the year, with support from Surrey Police. In April 2010, there were eight Watches operating in the borough (compared to nine in April 2009): four in Mytchett (Brewery Road, Coleford Bridge Road, Hamesmoor Road and Mytchett Road), two in Camberley (Parkway and Crawley Hill/Church Hill), one in Bagshot (Whitmoor Road) and one in Lightwater (Ambleside Road). Since October 2009, SpeedWatch volunteers have contributed an average of 12 hours a month – compared to an average of 18 hours a month during 2008/09.



In May 2009, 220 pupils took part in a pilot **School SpeedWatch** scheme at Ravenscote Community Junior School in Frimley. The exercise resulted in 259 motorists being stopped, and four drivers being issued with a fixed penalty notice. The pilot was deemed a great success and was planned to run again at the school in May 2010.

For older pupils, a series of **Theatre in Education** workshops were held in Surrey Heath schools in March 2010. Organised by the SCC

Safer Travel Team, again as part of the Drive Smart campaign, the workshops involved Year 7 and Year 12 students taking part in tailor-made drama performances to provide them with strategies to keep themselves safe and to influence the actions of other road users or drivers. The Partnership promoted the initiative by way of press release and a feature on the website.

6.2 Misconceptions about crime and ASB

Partnership activities are not just aimed at reducing crime and disorder, but at challenging misconceptions about the levels of crime and disorder in people's neighbourhoods. The publication of the PAP 2009/10 in May 2009 highlighted the key community safety priorities and reinforced the fact that crime levels in Surrey Heath are well below the national average.

A full page article about the PAP was published in the July 2009 issue of the borough magazine, *Heathscene*, distributed to 34,000 households.

The 2010 British Crime Survey revealed that **public confidence** in Surrey in how police and councils were dealing with ASB and crime was top in the country. The survey results showed public confidence had increased by 3.7 per cent to 58.6 per cent between June and September 2009, putting Surrey top of the national table, compared to sixth in June 2009. Confidence in local policing within Surrey Heath also rose during the year, with 86.8 per cent of Surrey Heath residents being 'very' and 'fairly' confident with local policing at year-end 2009/10 - compared to 80.7 per cent in at year-end 2008/09 (Surrey Policing Plan rolling confidence target measures). These results were publicised on the SSHP website.

6.3 Shared responsibility for community safety

Partners supported many local community events during the year, taking the opportunity to remind residents and businesses about the part they can play in helping to keep their neighbourhoods safe. These events included the **Heatherside Halloween Howler** in October 2009. As a direct result of targeted crime and disorder reduction activities in the run up to this year's Howler, the borough saw a 25 per cent drop in the number of reports of criminal damage over the Halloween weekend (from 12 in 2008 to nine in 2009). Prior to Halloween, neighbourhood officers worked with partner agencies to visit shops and advised against the selling of eggs, flour and similar items to young people. Additionally, the SHBC licensing team and Trading Standards officers carried out test purchasing operations at licensed premises where alcohol and fireworks might be sold to underage customers.



Around 800 residents flocked to a **Six Villages Community Day**, held at Streets Heath Rec. in West End in March and hosted by Surrey Police. Neighbourhood Watch supported the event with its crime prevention trailer, and SFRS also attended. An **Old Dean Fun Day** was held in November 2009, bringing together partners and residents, and was also well attended.

7. PRIORITY 2: REDUCE PUBLIC PLACE DISORDER

Reducing public place disorder remained a key focus for Partnership activities during 2009/10, specifically:

- Reducing secondary fires at waste sites and recycling centres
- Reducing alcohol-related social disorder
- Reducing criminal damage at hotspot locations

7.1 Secondary fires

There were 147 deliberate secondary fires recorded in Surrey Heath during 2009/10 - an increase of 96 per cent on the previous year. This figure, however, must be viewed against what historically within the borough is an incident type which is very prone to seasonal fluctuations. As reported by SFRS, there were in fact spate conditions during the second quarter (April to June 2009) when 91 of these incidents (61 per cent) occurred. In addition, a new Home Office (HO) recording system was introduced into the Service last year resulting in more thorough recording of this type of incident and there are still some 'health warnings' on this data.

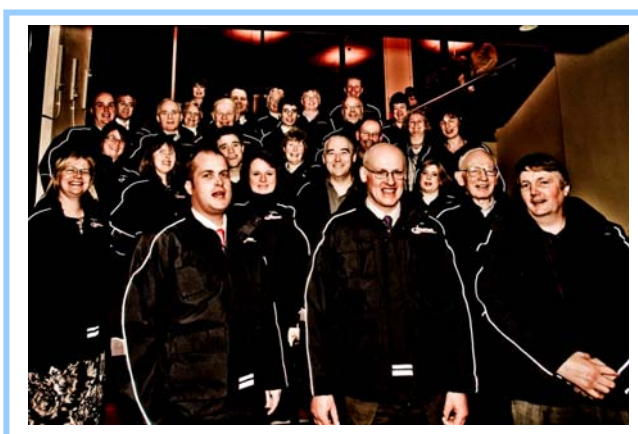
SFRS continued to work with Partners where appropriate to deliver its community safety initiatives. These included among many others the Firefighter for a Day events, the School Firewatch Scheme that encourages arson champions in schools who are identified by a prefect style Fire Watch badge, and the Youth Engagement Scheme (YES).

The **YES scheme** involves young people, aged 14-16, spending a week at a fire station, where they experience hands-on training (in a controlled environment) about the essentials of being a firefighter. The scheme is aimed at young people who are considered at risk of becoming involved in ASB and/or crime. Candidates are nominated by multi-agency groups, including CIAG. The Partnership contributed funds towards the YES scheme once again during 2009/10. This year, Partners made 24 referrals to the scheme for one of four courses at Farnham fire station. After assessment at a taster session, 13 young people were offered places on a course and 10 successfully graduated. One of the young graduates from Surrey Heath provided the following feedback: *"I just wanted to say thanks; you've given me such a different look on life. I am much happier now and keep remembering all the help...you really opened my eyes and my opinion on life..."*

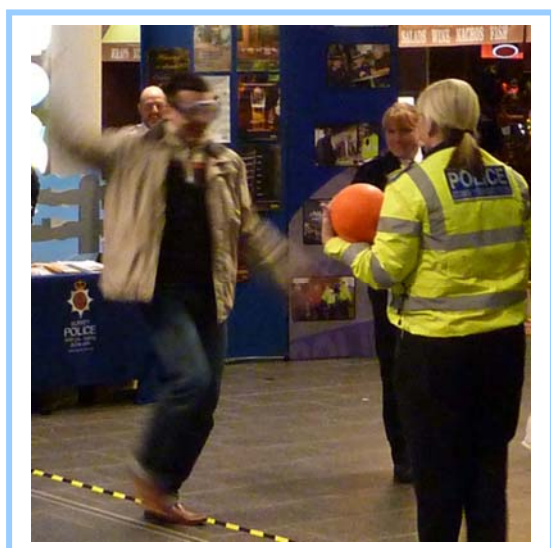
7.2 Alcohol-related social disorder

A major project funded by the Partnership during 2009/10 was the **Camberley Street Angels** scheme. Set up and managed by Churches Together in Camberley, the scheme involves groups of volunteers out and about in Camberley town centre on Fridays between 10pm and 3am offering a calming presence and practical support to people in need. Wearing distinctive jackets, Street Angels carry items to assist anyone who may be having a problem. Among practical things such as plasters for blisters, foil blankets for the lightly dressed facing a long walk home in the wet, and flip flops for girls with sore feet, they also have lollipops

which can be popular with revellers. Volunteers are happy to spend time talking with people and are able to advise of specialist agencies who can provide ongoing assistance if required. Street Angels work with the support of, and in partnership with, other agencies working in the town centre at night and have connecting links by radio with each other, the team base, CCTV and the police. The scheme has proved a great success so far, and it is hoped that it will extend into Saturday nights during 2010/11 if funding can be secured.



In November 2009, with the festive season approaching, officers redoubled their efforts to urge people to think about the amount that they may be drinking - and to drink responsibly when out on the town. The Partnership supported the HO **Know Your Limits alcohol awareness** campaign with a full-page advertisement in the Camberley Vue cinema magazine, *PreVue*, for its November and December issues.



This formed part of the Partnership's inaugural **Safer Christmas campaign** focusing on **Safer Shopping** (*see later*) and **Safer Celebrations**. The main Safer Celebrations activities took place on the three Saturdays before Christmas and included officers being in the Atrium on Saturdays 5 and 12 December between 7pm and 10pm, giving people advice and tips on safe, sensible drinking and safer driving. People could try on 'beer goggles' and then attempt to walk along a straight line strip, to experience the effects of alcohol.

Surrey Trading Standards carried out an alcohol test purchasing operation in December 2009, which resulted in three

town centre premises (out of 12 tested) failing and being fined £80. One-off Partnership funding enabled the **Taxi Marshals** to be back in action on Christmas Eve and New Year's Eve, between 10pm and 4am on Camberley High Street, to ensure residents got home safely. Surrey Heath Pubwatch members displayed specially-designed Safer Celebrations posters featuring safety tips for a great night out, in the toilets of their premises – one designed for females and one for males. Handbag sized safety information cards were also distributed to customers in pubs and clubs.

The launch of the **Camberley Together Against Crime (CTAC)** initiative in September 2009, with funding from the Partnership, was aimed at tackling crime and ASB in the town centre. The security initiative, incorporating a radio network, information sharing and improved communication between town centre users, is led by the Camberley Town Centre Partnership and supported by the Partnership. All shops and businesses that are part of CTAC are able to communicate with each other in real time via a town radio network, which links directly to the police and CCTV. In the event of an offence being committed, information can be immediately communicated between members around the town, and if the offender has a previous conviction, their presence in a member's premises will immediately be communicated to others on the radio network. The target of having 40 members signed up to CTAC by June 2010 was reached in December 2009 and, as at April 2010, CTAC had 47 members. According to the CTAC Coordinator, the scheme is proving a highly successful deterrent with approximately two-thirds of all crimes now being detected.

7.3 Criminal damage

Officers of the borough continued to utilise the Partnership's **anti-vandalism postcard**, produced in January 2009, at targeted locations. SHBC leisure services carried out a large postcard drop in Q1 at households around the Evergreen Road playground in Frimley, thereafter seeing a reduction in the number of reports of vandalism in that area. There was a slight increase in criminal damage over the year – rising from 957 to 979 in 2009/10 – and tackling the problem in nominated areas remains a Partnership priority.

There were 145 reports of **littering** during 2009/10, compared with 77 in 2008/09 – giving an average of 12 reports per month compared with six per month the previous year. The total number of reports of graffiti also increased, rising from 32 in 2008/09 to 72 in 2009/10. However, the monthly number of reports of graffiti fell during the year, going from 12 and 10 in April and May 2009 respectively, to just one and two in February and March 2010. A message encouraging residents to dispose of their cigarette butts appropriately was created for the SHBC contact centre display screen during Q3 and 4.



8. PRIORITY 3: REDUCE PRIORITY CRIMES

The priority crime objectives featured in the PAP 2009/10 were:

- Reduce repeat domestic abuse cases
- Reduce domestic burglary in vulnerable areas
- Reduce theft of high value vehicles

8.1 Domestic abuse

The Partnership continued its annual grant to fund a domestic abuse **outreach worker** at Surrey Women's Aid (SWA) to help victims of domestic abuse in Surrey Heath. The outreach helpline is available for all victims of domestic abuse, 24 hours a day, seven days a week. During the year, there was a significant 34 per cent increase in referrals to the outreach service – from 221 in 2008/09 to 335 in 2009/10. SWA reported that the impact of the credit crunch was the primary reason for this increase.

SWA ran the **Freedom Programme** in Surrey Heath this year, and eight clients attended (six attending every session). All of the clients who attended said on a feedback form afterwards

that they were 'highly unlikely' to return to their abusive partner. SWA reported that the programme was very effective in reducing risk for the clients and their children and increasing their awareness of abusive tactics used by perpetrators. The number of residents who took up the Partnership-funded **Sanctuary Scheme**, which allows victims of domestic abuse to remain safely in their own homes by providing additional security, fell from 15 in 2008/09 to 11 in 2009/10.

As it does every year, the Partnership supported the annual **Surrey Domestic Abuse (DA) Awareness Week** in October 2009. Partners chose a young people's focus for its 2009 campaign and ran a pilot poster competition with Tomlinscote School in Frimley, challenging Year 10 pupils to design a poster to raise awareness of domestic abuse among their peers. The winning poster was professionally produced in A3 and A4 versions and placed on 25 noticeboards throughout the borough; copies were sent to seven schools, shared with YDS and published online. The Partnership gave voucher prizes to the winning students (1st, 2nd and 3rd place).



During DA Week 2009, approx. 1,500 pens and 1,000 credit card sized information leaflets were distributed via a week-long display in the Mall, in the SHBC contact centre, in the Old Dean advice centre and at Camberley rail station. Thirteen multi-agency staff attended a workshop run by SWA at Surrey Heath House with the aim of increasing the diversity of the source of referrals. Eight Partnership officers gave up 11 hours of their time during the Week, and a full-page feature about a day in the life of a DA outreach worker was submitted by the Partnership and published in the October issue of the borough magazine, *Heathscene*.

In February 2010, the Partnership supported a hard-hitting HO campaign to raise awareness of **teen abuse**. A supporting press release was prepared, posters displayed and HO literature shared with schools and youth workers. Relevant links were added to the Partnership's website and a dedicated page on teen abuse was created to encourage young people to seek help and advice should they need it.

8.2 Domestic burglary

The year saw a 17 per cent reduction in domestic burglary – from 241 reported incidents in 2008/09 to 200 in 2009/10.

Early in the year, the Partnership supported a **National Burglary Action Day**, with a display in the SHBC contact centre between 6 and 14 April 2009. Burglary prevention advice was also put on the contact centre display screen. A press release was issued supporting the campaign and uploaded to the SHBC and SSHP websites. The Partnership produced 1,000 'cat burglar' themed **anti-burglary** postcards in September 2009, giving tips on keeping your home and garden secure. These were distributed to partners for targeted use at their discretion. The postcard was re-promoted in the spring 2010 issue of *HeathWatch*. Such was demand from Neighbourhood Watch coordinators for stocks of the postcard that an additional print run of 500 postcards was required.



Once again, a localised **Not In My Neighbourhood Week** campaign (2-6 November 2009) was implemented to support this HO campaign – with a focus on burglary in the villages. Stands and events were organised by Surrey Police in Windlesham with support from

Partnership officers and Neighbourhood Watch. Selecta DNA property marking kits, funded by SSHP, were given free of charge to residents at the discretion of the borough's Crime Reduction Advisor, and some 400 anti-burglary leaflets were handed out. A pre-event press release was issued and information posted on the SSHP website events page; a post-event feature and photos of events were also posted on the SSHP website.



A new **Neighbourhood Watch** flyer was created in time for the Surrey Heath Show in May 2009, and made available for download from the SSHP website; 500 copies were printed and distributed. A special message was created for the SHBC contact centre plasma screen to promote Neighbourhood Watch and encourage people to get involved. PDF copies of the NW newsletter, *HeathWatch*, were uploaded to the SSHP website.

The Partnership's Safer Christmas campaign in November/December

2009 focused on Safer Shopping in the towns, but also on **domestic burglary during the festive period**. Posters encouraging residents to not leave Christmas presents on display under the tree were used throughout the borough.

8.3 Vehicle theft

Vehicle crime increased by 21.8 per cent during 2009/10 – from 371 reported crimes in 2008/09 to 453 in 2009/10.

Surrey Police led efforts to encourage motorists to protect their vehicles from theft during the year, in partnership with local businesses. In Q3, an **auto crime 'blitz'** was carried out in targeted areas, primarily the A30 London Road between Windlesham and the Meadows Roundabout. Around 600 leaflets, 500 air fresheners and 100 auto crime posters were given to public houses, hotels and restaurants to disseminate to patrons. An auto crime prevention stand was set up in the Atrium and the Mall, and a leaflet drop was carried out on all households on Connaught Park, Bagshot.



A number of **bike safety events** were held during the year, with promotional materials promoting pedal cycle security given out to members of the public. Bike safety was promoted at the Frimley Green Clean Up events in May and September 2009, with the Neighbourhood Watch crime prevention trailer in attendance. More than 100 residents attended each event.

9. PRIORITY 4: REDUCE SUBSTANCE MISUSE

Tackling substance misuse remained a key focus for Partnership activities during 2009/10 specifically:

- Tackling Class A drug supply and drug-related ASB
- Reducing illegal alcohol supply and promoting safe, sensible drinking
- Improving education and awareness of alcohol misuse

9.1 Class A drug supply

There was a 12.5 per cent decrease in recorded drugs offences in the borough during the year – falling from 168 in 2008/09 to 147 in 2009/10. The detection rate for 2009/10 was 91 per cent.

Police and partner agencies supported the annual HO **National Tackling Drugs Week** in June 2009. The Surrey Police Drugs Bus visited Avenue Sucey, Camberley, and Heatherside Parade offering advice and information about the dangers of drugs. Officers also set up and manned a drugs awareness safety stand on Camberley High Street handing out safety packs. All week there was a display in the SHBC contact centre. During the campaign, West Division police officers executed a total of 20 drugs search warrants which led to nine people being arrested. The raids, which led to the arrests for possession and possession with intent to supply of Class A, B and C drugs including heroin, ecstasy and cannabis, were carried out in Guildford, Surrey Heath, Waverley and Woking.



The ban on the drug **mephedrone**, and its classification as a Class B drug, was publicised on the SSHP website in April 2010.

9.2 Illegal alcohol supply

An article on **safe, sensible drinking** was included in the winter 2009 issue of *Heathscene*, covering health issues as well as ASB and public place disorder. This tied in with the Partnership's **Safer Celebrations** campaign during November and December 2009 (see Section 7.2). This, in turn, linked in with the Partnership-funded advert based on the NHS **Know Your Limits** campaign, encouraging people to drink alcohol responsibly, that was placed in the November and December 2009 issues of the Camberley Vue cinema magazine, *PreVue*. Partners remained committed to supporting the SNAP disco events for young people aged 11-16 held at Camberley Theatre on regular Fridays nights. Where opportunities arose, officers promoted healthy lifestyle choices and the Crimestoppers number.

A **test purchasing operation** carried out by Surrey Police and Trading Standards in March 2010 was a 100 per cent success. Two 16-year-old test purchasers were used and 16 licensed premises, including pubs, off licences and restaurants, were visited and tested. All passed the test. These results were publicised afterwards.

9.3 Alcohol education and awareness

Surrey Drug and Alcohol Action Team (DAAT) continued to work with partners to educate and support residents with drug and alcohol problems. The Surrey Drug and Alcohol Advisory Service (SADAS) outreach service became operational during the year and covers West Surrey, including Surrey Heath. Also during the year, CRI (arrested referral contractor) began providing screening for clients with alcohol problems across all Surrey custody suites. This service previously only dealt with drugs clients.

Officers spoke to around 600 people during the 2009 Safer Christmas campaign and, where appropriate, Drinkaware Trust promotional materials were given out to encourage residents to know more about safe and sensible drinking levels, and the number of units of alcohol in popular drinks. Materials handed out included alcohol unit wheels, drink diaries and leaflets for parents on 'Yours Kids and Alcohol'. An article on safe, sensible drinking was included in the winter 2009 issue of *Heathscene*, and covered health issues and alcohol units.

10. PRIORITY 5: ORGANISATIONAL ISSUES

Internally, the Partnership set itself two priorities to improve organisational processes during the year, namely:

- Improving partner agencies' understanding of their role under Section 17
- Having a timely and confidential information sharing system

10.1 Section 17

A Practitioners' Area was created on the Partnership website this year, including information about Section 17, news from the Government of the South East (GOSE) and archived internal community safety e-newsletters. The quarterly internal Community Safety E-Update included a link to the Section 17 page each time, to encourage staff from Partner agencies and others to be aware of their responsibilities under Section 17. Section 17 formed part of a CIAG workshop agenda held in March 2010.

10.2 Information sharing

A number of Partnership officers attended an information sharing protocol training day in Woking in May 2009. Improvements were made during the year to ensure JAG and CIAG officers understood their roles and responsibilities and shared good practice.

11. HEATHERSIDE YOUTH FACILITY PROJECT

Significant progress was made with the Partnership's Heatherside youth facility project during 2009/10. At its April 2009 meeting, the Partnership approved four final options for public consultation: 1) a community-run building; 2) a Village Green outdoor space; 3a) a Village Green with skatepark; 3b) a Village Green with BMX track; and 4) no new facility.



In July 2009, the Partnership began a large scale consultation with the residents of Heatherside to find out their preferred option. A total of 2,011 completed surveys were returned by residents of all ages, indicating their preferred option out of the four proposed, which was for a Village Green with skatepark. Based on this, and on the comments received in person, by email and at two public meetings held in Heatherside, the Partnership agreed to proceed with this option.

Officers continued to work with a community project group and local ward councillors to develop the blueprints for the new space. SHBC invited tenders to carry out the works, and two proposals were received. At its April 2010 meeting, the statutory Partnership members approved one of these contractors, Wicksteed (*computer generated image shown above*) to begin the works. A planning application is being drawn up, which will be submitted in summer 2010.

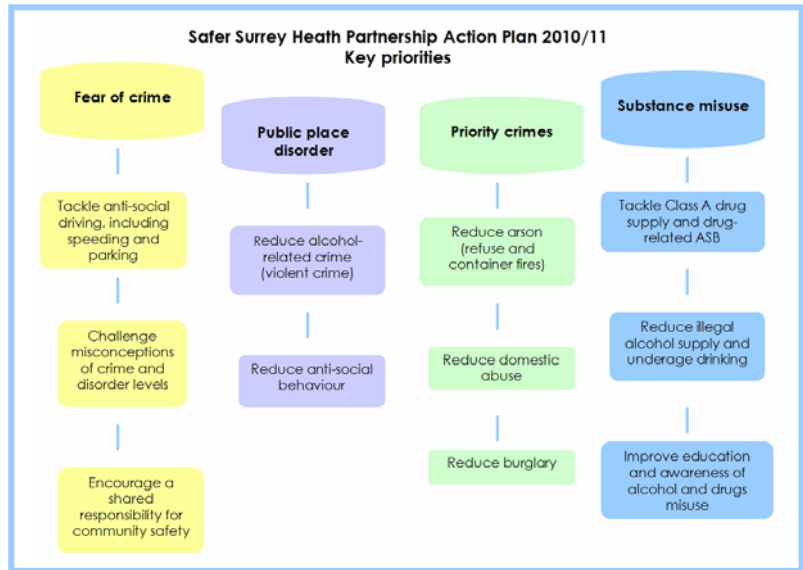
For more information about the Heatherside project, visit www.safersurreyheath.info/heathersideconsultation

13. PARTNERSHIP PLAN 2010/11

The Partnership's 2009/10 strategic assessment was completed in March 2010 and clarified partners' community safety priorities for 2010/11.

The Partnership was advised to focus on success areas to ensure that improvement was sustained, and to focus its activities during 2010/11 on the following:

- Non-dwelling burglaries
- Violence against the person
- Alcohol-related crime
- Arson
- Traffic-related issues
- Perceptions of crime and disorder
- Road traffic casualties



A summary of these priorities (as above) can be found on the Partnership's website.

14. COMMUNICATIONS

During 2009/10, the Partnership's Communications Officer continued working with officers to devise and deliver communications campaigns, publicity and promotions to raise awareness of crime and disorder reduction work being undertaken in Surrey Heath, and to help reduce fear of crime. Reporting to the Partnership Chairman, the Communications Officer acts a primary point of contact for Partnership officers in all communications matters, as well as for the public, working with partner agencies' communications teams when appropriate.

As part of the Communications Strategy for 2009/10, communications activities were targeted with key messages and output tailored to the objectives of the PAP 2009/10, which is updated on a monthly basis by the Communications Officer. The Partnership website's content was expanded during the year, with 1,140 total page views recorded in March 2010 compared to 878 in April 2009. During the year, almost 5,000 people visited the site for the first time. An average of 457 people visited the site every month during 2009/10.

During the year to April 2010, 14 Partnership press releases were issued and 30 news items were published to the Partnership website (compared to 10 and 21 respectively in 2008/09). Community safety articles were published in all four issues of the borough magazine, *Heathscene*, and the Neighbourhood Watch quarterly newsletter, *HeathWatch*, continued to be an important communications tool for community safety messages. A quarterly internal e-newsletter, *Community Safety E-Update*, continued to keep partners up-to-date with community safety developments and projects.

15. ABOUT THE SAFER SURREY HEATH PARTNERSHIP

Under the Crime and Disorder Act 1998, agencies in England and Wales have a statutory duty to form a Community Safety Partnership (CSP) to tackle key community safety issues. The agencies required to take part are the borough and county councils, primary care trust, fire authority, police authority and, from April 2010, probation. CSPs are required to review the levels and patterns of crime and disorder in the area, and develop and implement strategies to tackle these problems.

In Surrey Heath, the CSP is known as the Safer Surrey Heath Partnership and is made up of Surrey Heath Borough Council, Surrey County Council, Surrey Fire and Rescue Service (a department of Surrey County Council), Surrey Police, Surrey PCT, Surrey Police Authority, and Surrey and Sussex Probation Trust.

All partners work together to provide reassurance, raise awareness of community safety issues and implement a Partnership Action Plan to reduce crime, and fear of crime. The Partnership works closely with safer neighbourhood policing teams, housing associations, the criminal justice board, as well as voluntary organisations such as Neighbourhood Watch, to maintain the borough's high safety record.

Find out more at www.safersurreyheath.info